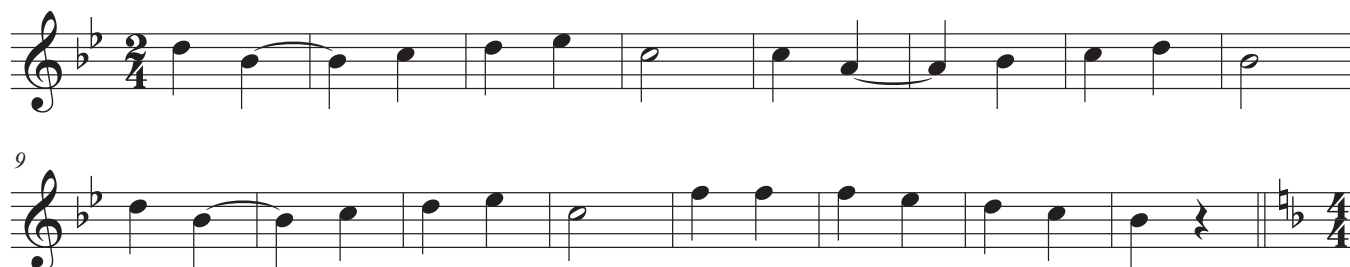


Gold Band Fall Chair Quiz 2022

Flute

As a band student entering the sixth grade at Highland you will be in the Gold Band. Mrs. Bollinger and Mr. Swartzloff need to decide where you should sit within your section in the band. You will play these at your first lesson next year and how well you play, compared with how well the other students in your section play, will determine where you sit within your section. It will not be part of your band grade.

#1) "Shoo-Fly"



#2) "Cruisin' Through the Park"



#3) "Yankee Doodle"

